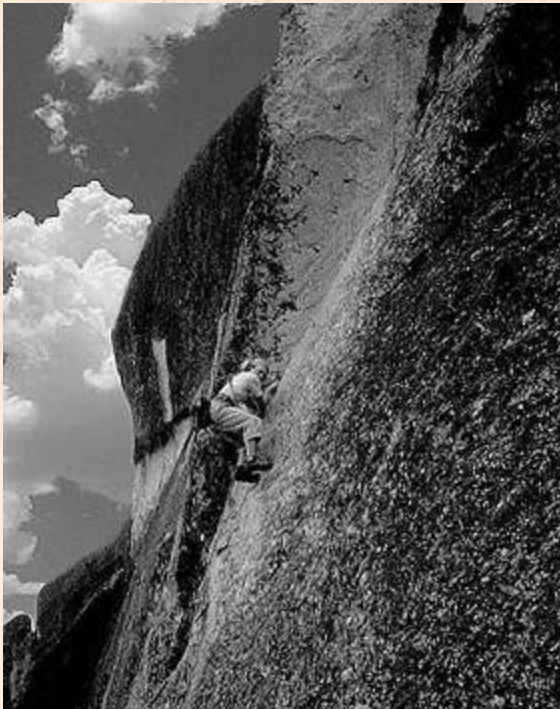




Protect America's Climbing

Land Conservation Workshop

Since 1990, Access Fund has helped acquire:



Donner Summit, 2005

- 38 climbing areas
- 7,000 acres
- Over \$350,000 in grant funding
- \$400,000 in AFLCC loans



LAND
CONSERVATION
CAMPAIGN

Placing land in climber friendly hands



Protect America's Climbing

Land Conservation Campaign

Revolving loan program

Contributions are recycled over time to conserve more land



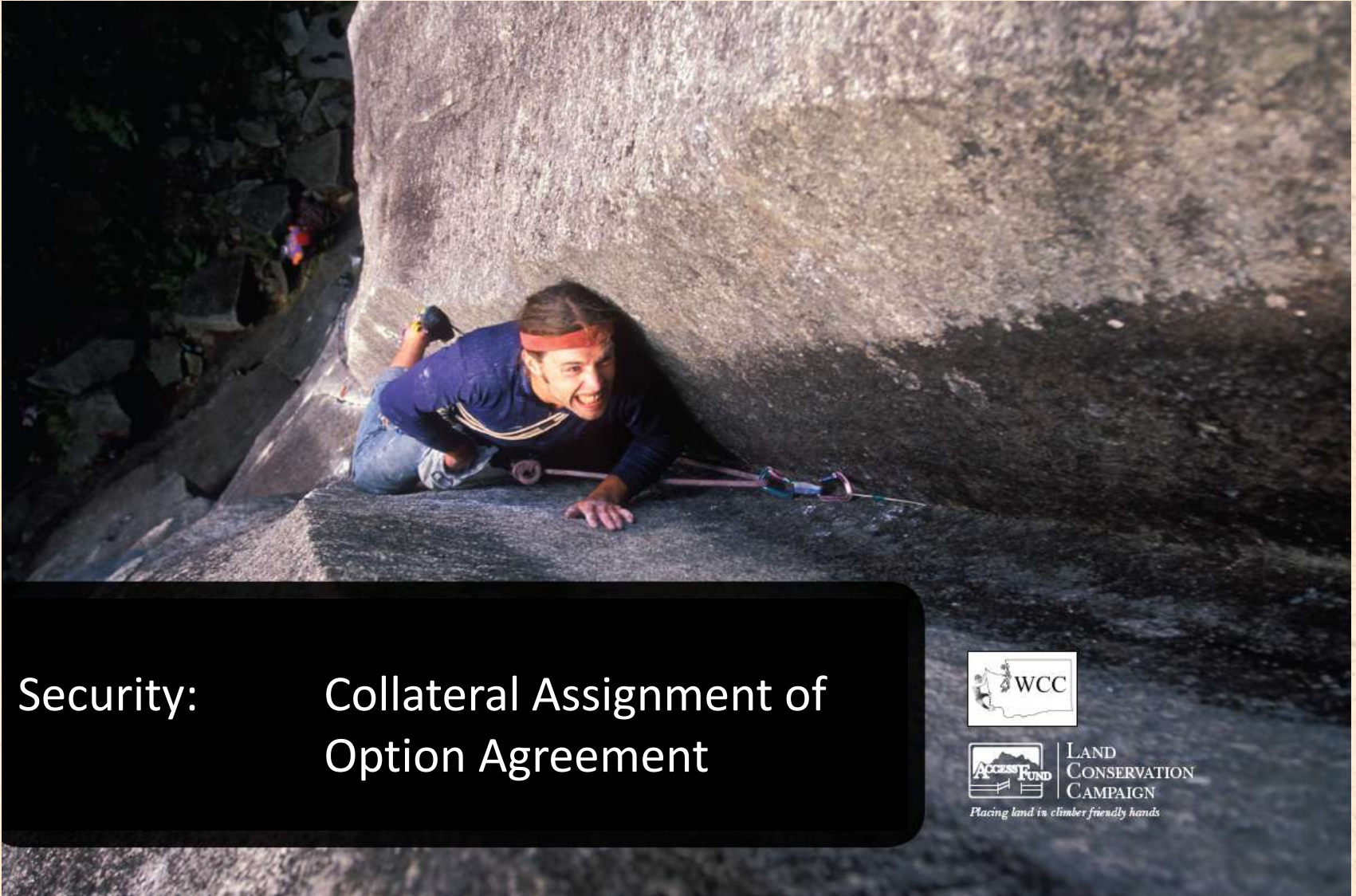
LAND
CONSERVATION
CAMPAIGN

Placing land in climber friendly hands



Index, Washington

Protect America's Climbing



Security: Collateral Assignment of Option Agreement



LAND
CONSERVATION
CAMPAIGN

Placing land in climber friendly hands



Protect America's Climbing

Rumbling Bald, NC



- 6 acre acquisition of popular West Side Boulders
- 200 boulder problems
- \$81,400 Purchase Price
- Access Fund loan of \$72,000
- Security: Deed of Trust on property and \$40,000 in personal guarantees



Protect America's Climbing

Revolving Fund Guidelines

Guidelines: Based on pilot projects and successful nationwide conservation revolving loan programs

Objectives:

- Protect the LCO
- Return the funds for future projects
- Make the process simple and flexible
- Set up the project for success



Protect America's Climbing

Land Conservation

Building Your Conservation Strategy



Protect America's Climbing

Designing your Project

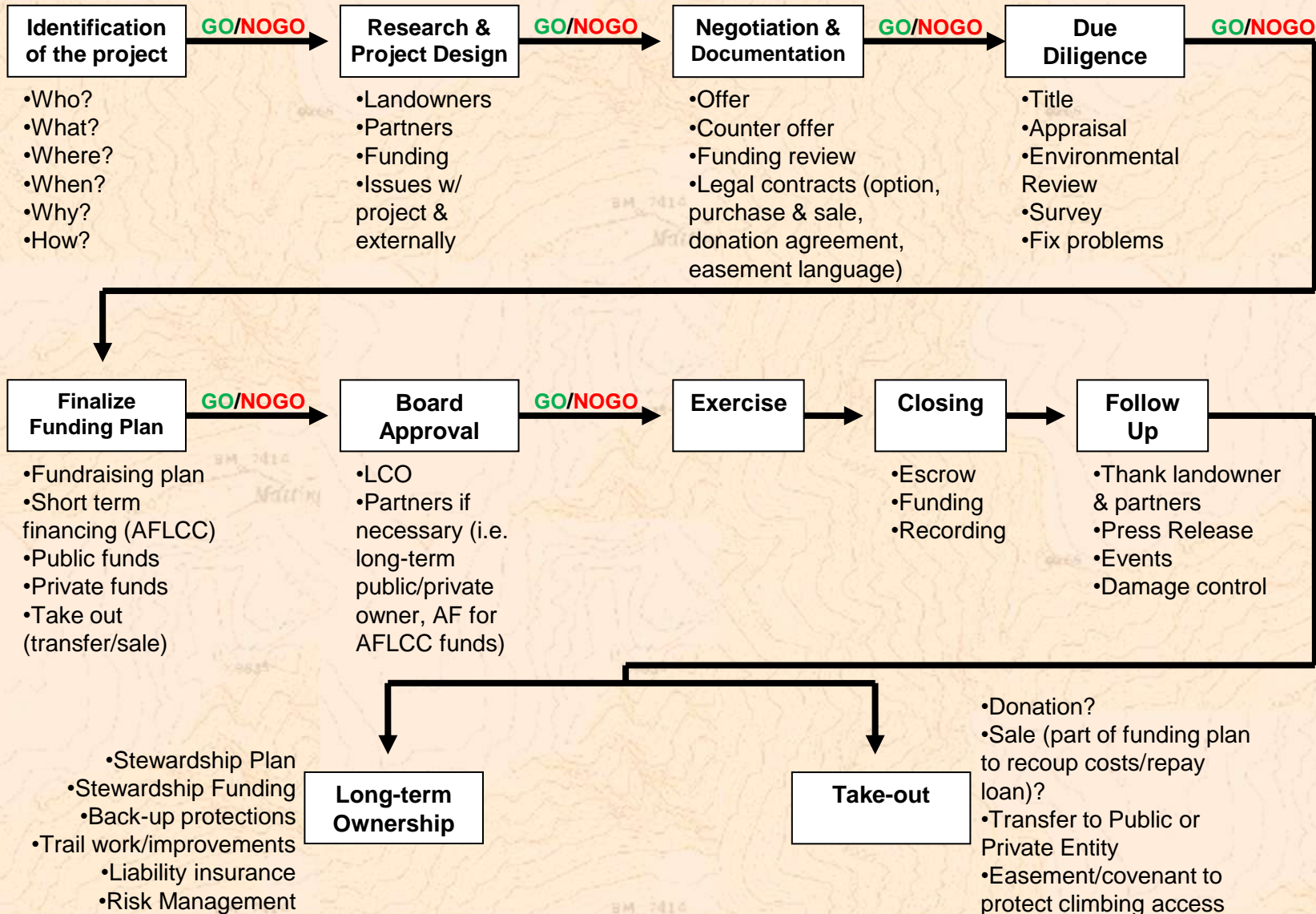


2011 National Access & Stewardship Summit - Golden, CO



Protect America's Climbing

Conservation Timeline





Protect America's Climbing

Identification

Who?

What?

Where?

When?

Why?

How?





Protect America's Climbing

Why and how?

- Growing in popularity
- Increased environmental, social, and cultural impacts
- Important resource for local climbers
- Unique resource regionally and nationally
- Changing land ownership or land use
- Proactive vs. reactive





Protect America's Climbing

Choosing your conservation strategy

Does the landowner allow the public to climb on the property?

Yes

No

Are additional protections/restrictions necessary?

Is the landowner willing to negotiate?

Yes

No

Yes

No

Volunteer stewardship/A-a-C
Warning signage
Waiver system
Fee use
Liability insurance
Rules & restrictions
Climbing management agreements & plans
Climb On!

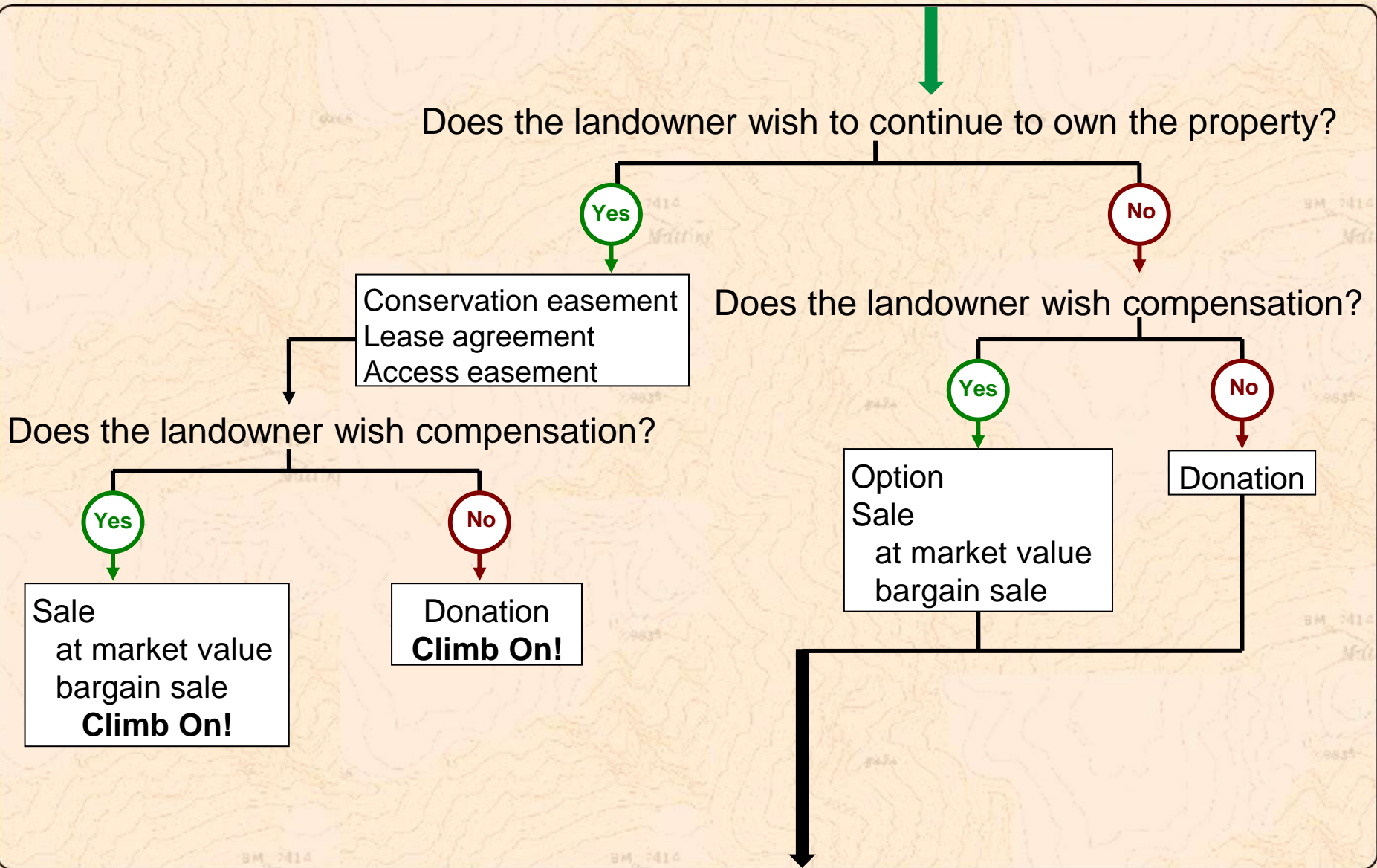
Volunteer stewardship/A-a-C
Monitor changes & threats
Climb On!

No Climbing



Protect America's Climbing

Choosing your conservation strategy





Protect America's Climbing

Choosing your conservation strategy

Are further restrictions necessary to ensure permanent protection?

Yes

Conservation easement
Deed restrictions
Climb On!

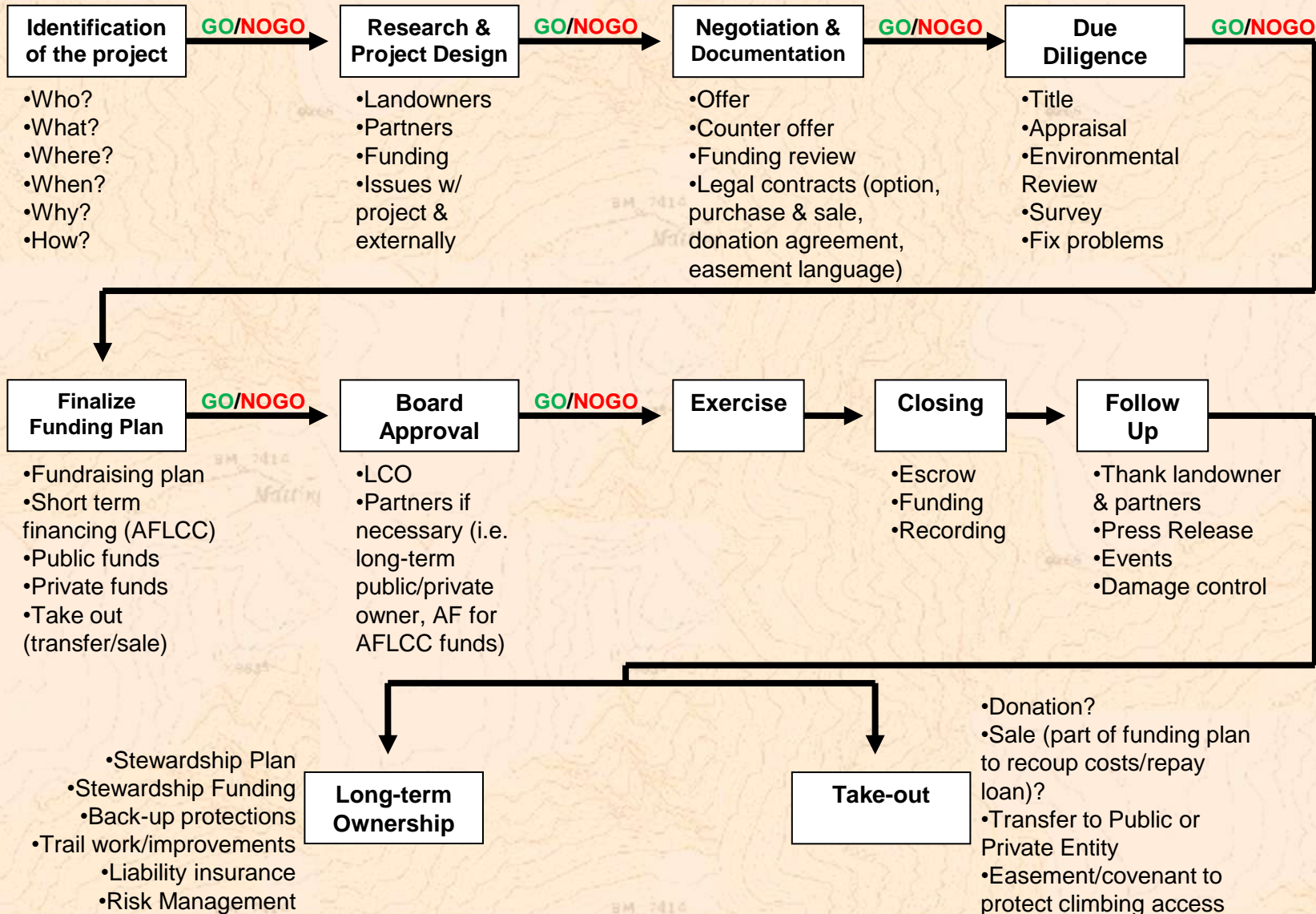
No

Normal transfer of title
Climb On!



Protect America's Climbing

Conservation Timeline





Protect America's Climbing

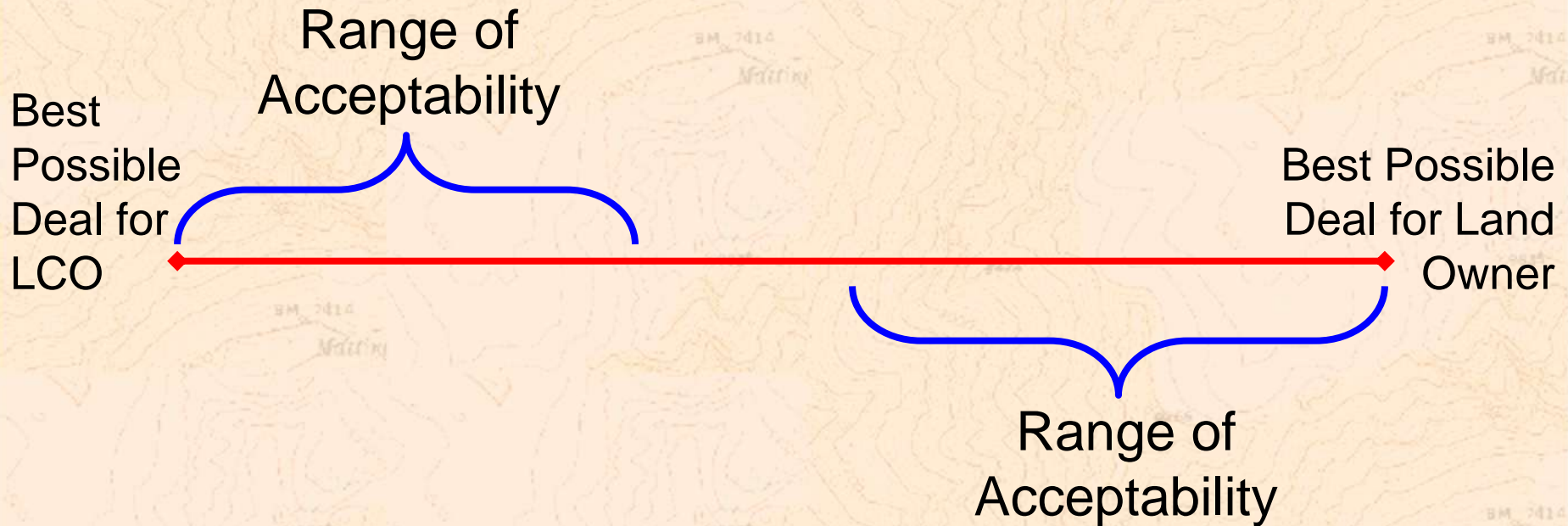
Deal or No Deal





Deal or No Deal

Protect America's Climbing



No Deal!